

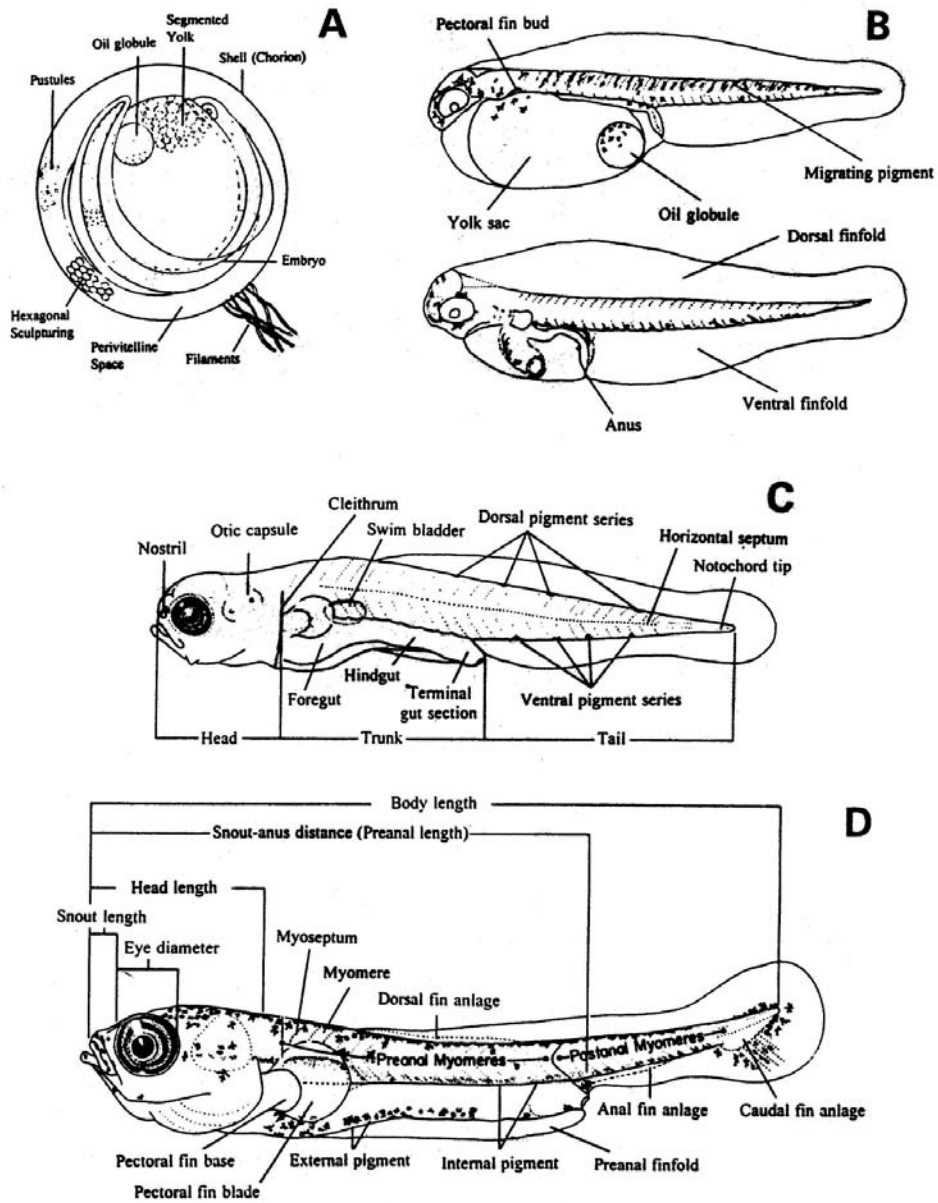
FISH LARVAE

(Prepared by Dr. K.J. Peter)

INTRODUCTION:

Information on the larvae and developmental stages of fishes of the Indian Waters, at the species level is very much scattered and incomplete. As most of the marine fishes have pelagic eggs and larvae, their identification even to the family level is a difficult task. The newly hatched larvae, from the yolk sac prolarval stage to postlarva or juvenile exhibit a variety of changes in the morphometric and meristic features characteristic to particular groups. The shape of body (string, ribbon, tadpole, zoea types), spinous ridges and spines on head and operculum, number and position of fins and their sequence of appearance, nature of larval pigmentation, alimentary canal, position of anal opening, etc. help to a large extent in fixing up the identity of the groups. Figures A to F show the anatomical and morphometric features of certain types of egg and larvae that are very typical.

Relevant literature dealing on this subject has been examined and scrutinized for the preparation of this inventory. To avoid confusion, in most cases, taxonomy and scientific names as given by the concerned authors are used here. In view of our imperfect knowledge of the distinguishing characters of early stages of larvae from Indian waters the arrangements of different species under different families made here have no strict taxonomical significance. The scheme of classification adopted and species dealt with here are listed in the following pages



Figures A to D.

Eggs and developmental stages of fish larvae showing anatomical and morphometric features.

A. Egg with embryo, B. Early and late larva with yolk,

C. Preflexion larvae, D. Late preflexion.

(Reproduced from Cal COFI Atlas, 1966, No.33, p. 29)

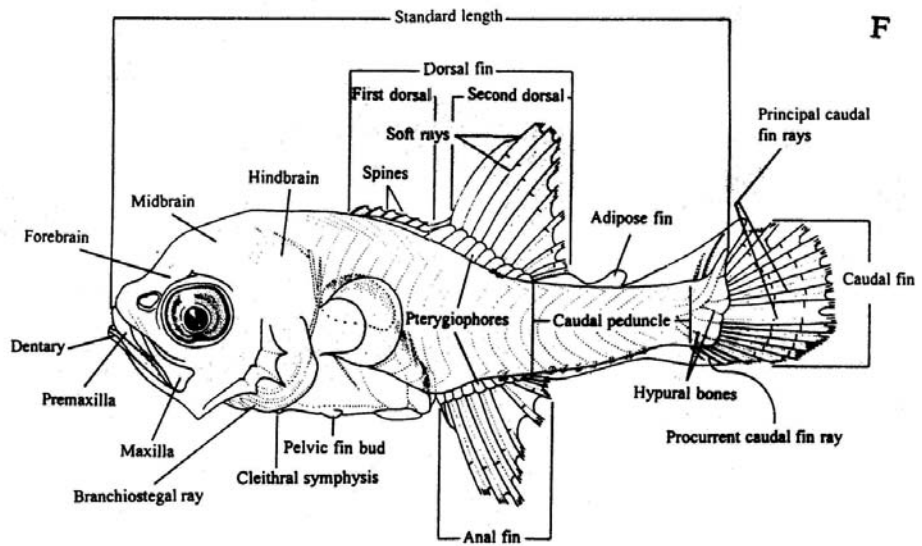
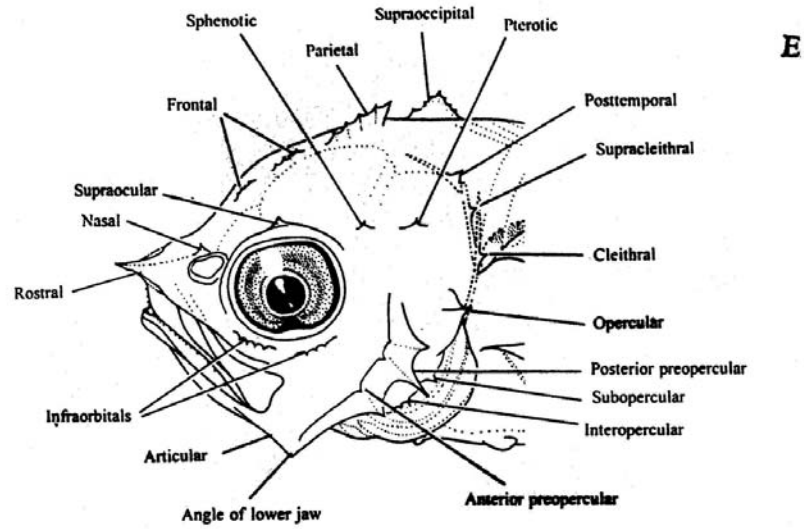


Figure E to F. Enlarged view of head showing larval spines.
 F. Post-flexion larva showing anatomical and morphometric features.
 (Reproduced from Cal COFI Atlas, 1966, No.33, p. 32)